



Grand Banks 42 Motoryacht 'TAPASYA'

LOA (m):	13.17 m
Beam (m):	4.29 m
Draft (m):	1.27 m
Engines:	2x 300hp Caterpillar
Cabins:	2
Homeport:	Heeg, Netherlands
Price:	€ 280,000

For 27 years, the Grand Banks 42 Motoryacht 'Tapasya' has been sailed, maintained and upgraded with great passion by the same owner. Tapasya has proven herself as a true Grand Banks with trips through Northern countries, the Mediterranean, Madeira and the Canarias. What makes the Tapasya so complete is:

- Stainless steel diesel, water and black water tanks
- Line and seaweed cutters on axles
- Sidepower bow and stern thruster
- 4-blade propeller (originally 3-blade)
- Kabola and Eberspächer heating
- Bow and stern anchor (+ reserves)
- Central vacuum system
- Trim Tabs



MARITEAM

- YACHTING -

MARITEAM YACHTING

Ceresweg 20-B, 8938 BG Leeuwarden 📍 The Netherlands 📞 Phone +31 (0) 582 889254
info@mariteamyachting.nl 📧 www.mariteamyachting.nl

Main specifications

Model:	42 Motoryacht
LOA (m):	13.17 m
Beam (m):	4.29 m
Draft (m):	1.27 m
Year:	1995
Hull Material:	GRP
Cabins:	2
Sleeping places:	4
Number of main engine(s):	2
Power of main engine(s) (hp):	300
Brand of main engine(s):	Caterpillar
Price:	€ 280,000
VAT status:	EU VAT Paid
HIN number:	GNDD0131A595

General

Name :	TAPASYA
Shipyard:	American Marine Signapore Ltd.
Air draft (m):	3.8
CE-category:	B
Hull material:	GRP
Deck material:	GRP
Superstructure material:	GRP
Deck finish:	Teak
Window material:	Single safety glass + mosquito screens
Fuel tank (Litre and material):	2271 Liters, Stainless Steel

Freshwater Tank (Liter and material):	900 Liters, Stainless Steel
Black water tank (Litre and material):	80 Liters, Stainless Steel
Maximum speed (Kn):	16 kn
Cruising speed (Kn):	8.5 kn

Accommodation

Stove:	Gaggenau 4 burner, electric
Refrigerator:	2x Isotherm
Freezer:	30L freezer
Interior finish:	Teak
Washing machine/Dryer:	Siemens Siwamat Plus 5433
TV:	TV in salon + Chrome cast
Radio:	Pioneer DEH-X5900BT
Single berths:	1x Sleeping couch in salon
Double bed:	2x
Cabins:	2x
Toilets:	2x electric
Showers:	2x
Combi oven/microwave:	Siemens combi

Machinery

Port engine (Brand, type, hp, gearbox):	Caterpillar 3116 TA, 300 hp, Twin Disc
Engine hours port engine:	5574 hours
Star engine (Brand, type, hp, gearbox):	Caterpillar 3116 TA, 300 hp, Twin Disc
Engine hours starboard engine:	5654 hours

Main engines control (Brand and type):	Morse dual lever
Drive (Shaft, IPS, Jet):	Drive shaft
Shaft lubrication:	Waterlubricated
Prop (Number of blades, material):	2x 4 blade + 2x spare 4 blade
Rope cutter on propulsion:	present
Generator (Brand, type, Kw):	Onan
Generator hours:	2985 hours
Bowthruster (Brand, type, elec/hyd):	Sidepower 24V
Sternthruster (Brand, type, elec/hyd):	Sidepower 24V
Electrical bilge pump:	2x Rule industries
Manual bilge pump:	present
Oil change system:	12v change system for engine and generator
Hot water system:	Seaward boiler
Heating system (brand, model, type):	Kabola hot air + Eberspächer back-up
Trim system:	Trim Tabs
Macerator pump:	2x Jabsco Par-Max 2.9
Steering system:	Mechanical
Deckwash:	Present on the bow and aft deck

Electrical system

House battery (Number of battery,type, total Amp, year):	1x Exide Dual AGM 12v/1200a/240ah + 3x Bosch TE 080 12v/1150a/225ah
Start battery (Number of battery,type, total Amp, year):	2x Tudor Strong Pro 12v/185ah
Bowthruster battery (Number of battery,type, total Amp, year):	2x Victron Energy AGM 12v/130ah + Orion-Tr Smart 12/24-15 charger
Sternthruster battery (Number of battery,type, total Amp, year):	2x Victron Energy AGM 12v/130ah + Orion-Tr Smart 12/24-15 charger



Generator battery (Number of battery,type, total Amp, year):	Exide 12v/115ah + Victron Energy Blue Smart Charger
DC system (V) AC system (V):	12V/220V
Inverter (V/W/Amp):	Victron Energy Phoenix Multi Plus 12v/3000a/120ah
Battery charger (V/W/Amp):	Victron Energy Phoenix Multi Plus 12v/3000a/120ah

Safety system

High water alarm:	present
Life raft:	6 person, expired

Navigation system

Compass:	2x Ritchie
Radar screen:	Anritsu RA771UA
Radar :	Simrad
Depth meter:	Robertson Dataline Depth
Log:	Robertson dataline speed
VHF:	Shipmate RS8400
AIS:	present
Autopilot:	Robertson AP300x
Rudder indicator:	Quarz VDO

Equipment

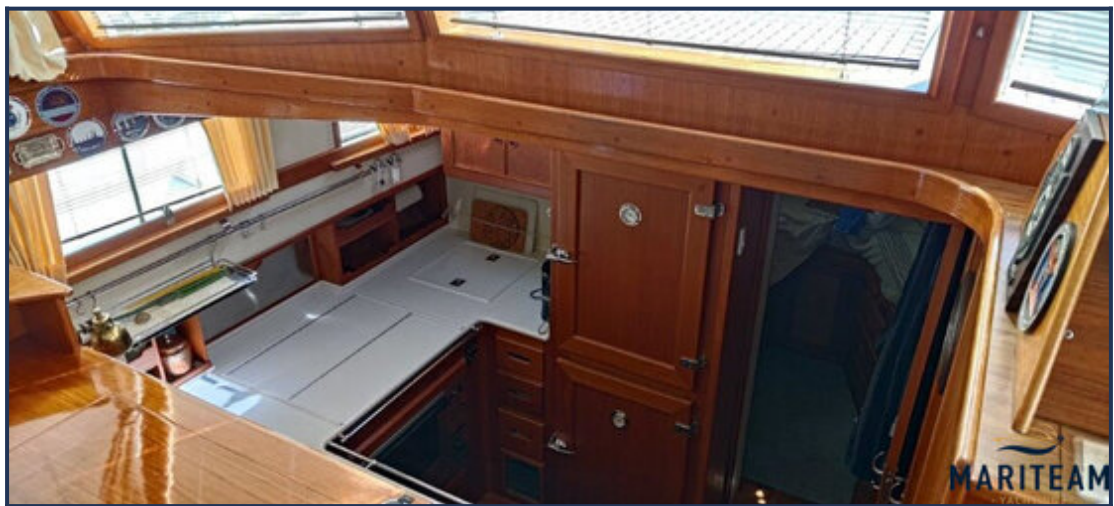
Anchor:	CQR bow anchor & Danforth stern anchor + 2x spare
---------	---

Windlass:	Electric windless with 12mm SS chain
Gangway:	Manual foldable gangway
Tender crane:	Whittall ED SS Davids
Deck shower:	1x hot and cold on aft deck
Window ventilation:	Slide and tilt windows



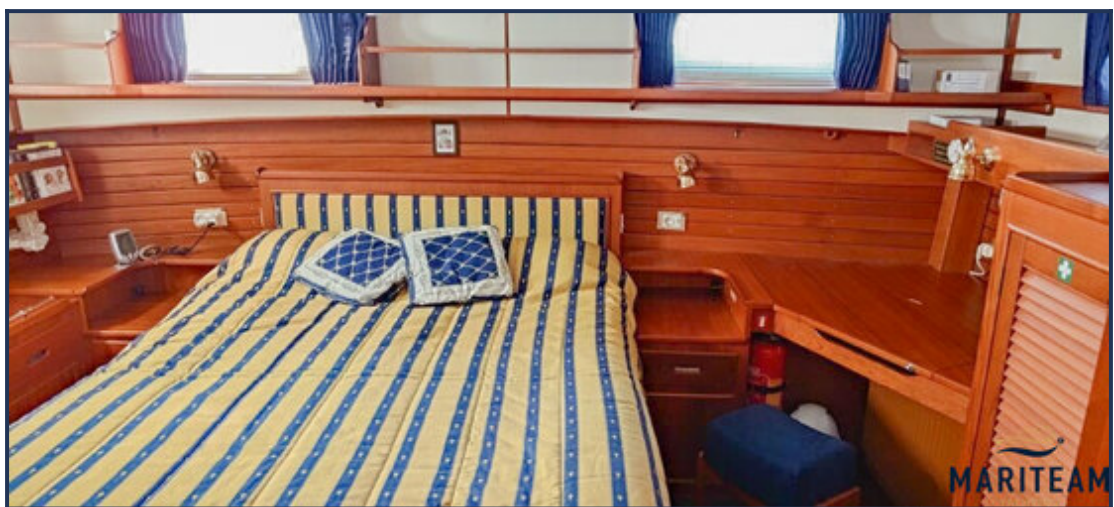
















MARITEAM

- YACHTING -

NEW PHOTOS COMING SOON

These particulars are given in good faith as supplied but cannot be guaranteed and cannot be used for contracts.